



PRACTICAL GUIDE

Before your arrival

SUMMARY

1. Checklist : European Students
2. Checklist : Non-European students
3. Average prices
4. Arrival in France
 - Arrival in Dijon
 - Arrival in Lyon
 - Arrival at BSB
5. Our contacts

ME BELLE EN
THE NOX
IN MI

CHECKLIST : European students

- Valid passport or identity card
- European Health Insurance Card (compulsory)+ private insurance including repatriation and hospitalization (suggested)
- Original of your birth certificate
- Legal translation into French of your birth certificate
- Erasmus documents or any documents to be signed and required by your home institution
- Accommodation contract + your landlord/residence contacts
- Home insurance + guarantor

TO BE PACKED IN YOUR BAG :

- A credit card : please ensure with your bank there are no restrictions for international use
- A small amount of cash (100-200€) : in case your credit card is not working on arrival – please ensure to keep it safe
- Appropriate clothing : Dijon has a continental climate with hot summers and cold winters
- Mobile phone or international phone card
- International or French chargers



CHECKLIST : Non-European students

- Valid passport
- Valid student visa
- Private health insurance covering for the first 3 months of your stay including repatriation and hospitalization (suggested)
- Original of your birth certificate
- A legal translation into French of your birth certificate
- Erasmus documents or any documents to be signed and required by your home institution
- Accommodation contract + your landlord/residence contacts
- Home insurance + guarantor

TO BE PACKED IN YOUR BAG :

- A credit card : please ensure with your bank there are no restrictions for international use
- A small amount of cash (100-200€) : in case your credit card is not working on arrival – please ensure to keep it safe
- Appropriate clothing : Dijon has a continental climate with hot summers and cold winters
- Mobile phone or international phone card
- International or French chargers



AVERAGE PRICES

- a baguette: 1 Euro;
- a croissant: 1.10 Euros;
- 1 kg of pasta: 1.50 Euros;
- 1 litre of milk: 1.20 Euros;
- 6 eggs: 1.50 Euros;
- a coffee in a bar or restaurant: 2 Euros;
- a fastfood meal: 7 Euros;
- a meal in a restaurant: 10 to 20 Euros;
- a sandwich from a bakery with a drink: 5 to 8 Euros.

Average cost (€/month)*	Dijon	Lyon	Paris
Accommodation	350-500	550-600	800 (Paris one-room flat)
Food	150	150	150
Other expenses	140	140	160-205
TOTAL	640-840	840-890	1100-1155

*Prices might vary depending on the city you are living in

*Living costs calculated for one single person. Personal expenses can vary according to student's lifestyle and type of accommodation





ARRIVAL IN FRANCE

ARRIVAL IN DIJON

Address: 29 rue Sambin, 21000 Dijon

TRAIN

Dijon has its own high-speed train station, with regular services running from Paris, Lyon, Lausanne, and Zurich, among other destinations. Timetable and price information is available on the [SNCF website](#).

- Paris Gare de Lyon - Dijon : 1hr 40mins (TGV)
- Roissy Charles de Gaulle - Dijon : 2hrs (TGV)
- Lyon - Dijon : 2hrs
- Lausanne - Dijon : 2hrs (TGV)

BUS, TRAM AND BIKE

Public transportation in Dijon are accessible from 6am to midnight, from Monday to Saturday. You can find buses and tramways every 5 minutes.

As well as 400 bikes in more than 40 stations, accessible 24/7. More information at : [Divia](#)

TRAIN STATION WELCOME

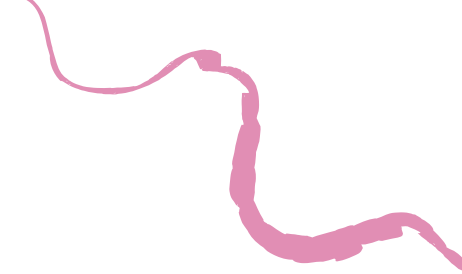
*Subject to availabilities

BSB organizes a free welcome service at Dijon train station, in order to accompany you all the way to your accommodation.

This service is run by the International Relations Departments and BSB students. They will wait for you at Dijon train station and will accompany you by car or tram to your accommodation (depending on accessibility).

To register to this service, please contact the Melting Potes student club at : meltingpotes@bsb-education.com

The Pick-up service will run from 11:00am to 11:00pm on specific dates. Outside of the dates and you can book a taxi (telephone +33 380 414 112). Taxis are frequently available at the station exit OR use the tram



ARRIVAL IN LYON

Address: 37 rue Saint Romain 69008 Lyon

AIRPORT

Lyon Saint Exupery airport is one of the biggest airport in France, located at only 25km of the city center. More information at : [Lyon Saint-Exupéry Airport](#)

TRAIN

Lyon has its own high-speed train station, with regular services running from Paris, Dijon, Marseille, among other destinations. Timetable and price information is available on the [SNCF website](#).

BUS, TRAM, SUBWAY AND BIKE

Public transportation in Lyon are accessible from 5am to midnight, from Monday to Saturday. You can find buses and tramways every 5 minutes.

4 subway lines, 5 tramway lines, 2 funicular lines, 130 bus lines. More informaion at : [TCL network](#)

TRAIN STATION WELCOME

*Subject to availabilities

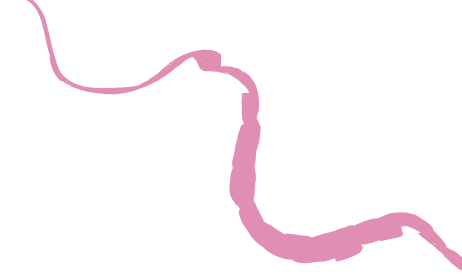
BSB organizes a free welcome service at Lyon Part Dieu train station, in order to accompany you all the way to your accommodation.

This service is run by the International Relations Departments and BSB students. They will wait for you at Lyon Part Dieu train station and will accompany you by bus or tram to your accommodation (depending on accessibility).

To register to this service, please contact the Ly'On Board student club at : lyonboard@bsb-education.com

The pick-up service will run from 11:00am to 11:00pm on specific dates.

Outside of the dates and you can book a taxi or [UBER](#).



BSB INDUCTION DAYS



Participation to the induction day is compulsory.

The BSB team receives you on the Dijon and Lyon campuses, which includes the organization of welcome days during which you can not only become acquainted with your new surroundings but also meet the main contacts with whom you will deal and obtain practical information on your future life in France.

- ❖ **Presentation of the cities and the opportunities available**
- ❖ **Administrative workshops (Opening a bank account, Housing benefits, French health insurance system ...)**
- ❖ **Methodological workshop: advice on organizing your studies at BSB**
- ❖ **French culture workshop.**

At the end of this series of welcome days you will be prepared to start your new student life!





**Do not hesitate to
contact us for further
information at :**

bsb.international@bsb-education.com